

# Port Augusta Accommodation Guide

Current May 2024



<https://www.portaugusta.sa.gov.au/>

<http://www.wadlata.sa.gov.au/>

# Table of Contents

---

Table of contents .....	<b>Page 1</b>
Motel / Hotels .....	<b>Pages 2 – 9</b>
Caravan and Cabin Accommodation .....	<b>Pages 10 – 13</b>

## **DISCLAIMER**

*All information contained in this publication has been provided by each of the accommodation providers. Whilst every effort is made to provide the correct pricing information, it may be subject to change at any time, without prior notice. Wadlata Outback Centre does not accept any liability to any person claiming they have been misled or deceived by any material herein.*



**Find out more about our region  
1800 633 060**



**Address:** 41 Flinders Terrace, Port Augusta, South Australia 5700

**Phone:** 08 8641 9193

**Email:** [info@wadlata.sa.gov.au](mailto:info@wadlata.sa.gov.au)

**Website:** <http://www.wadlata.sa.gov.au/>

# HOTELS AND MOTELS

## ACACIA RIDGE MOTOR INN

**MAP REFERENCE:** E6

**ADDRESS:** 33 Stokes Terrace

**PHONE:** 08 8647 2700

**EMAIL:** [portaugusta@discoveryparcs.com.au](mailto:portaugusta@discoveryparcs.com.au)

Star Rating 3 Star

47 rooms – 94 Guest Capacity

**FACILITIES:** Hotel Facilities include Free WIFI, Swimming Pool, Barbeque area. Guests also receive full access to Discovery Parks caravan park facilities including their Laundry Facilities. Room facilities include TV, air conditioning, microwave, kettle, toaster, bar fridge, complimentary tea/coffee, coffee cups, ensuite bathroom linen and hair dryer.

**PARKING:** Complimentary parking is located in front of guest rooms.

**DISABLED FACILITIES:** No disabled rooms –all rooms located on ground floor.

**PETS:** No pets allowed.



Rooms Starting **FROM** \$93 per night

Double/Queen	Queen 1 Single
Triple	Family (4)
Family (5)	Family (6)

# AUGUSTA BUDGET MOTEL

**MAP REFERENCE:** N14

**ADDRESS:** National Highway One

**PHONE:** 08 8642 2555

**EMAIL:** [info@augustabudgetmotel.com.au](mailto:info@augustabudgetmotel.com.au)

RAA Rating 2 Star

15 Units – Full Guest Capacity: 35 Guests



**FACILITIES:** Motel facilities include Laundry Room. Room facilities include; free Wi-Fi, flat-screen digital TV, air-conditioning, ensuite, microwave, electric kettle, toaster, and bar fridge.

**PARKING:** Complimentary parking located in front of guest rooms.

**DISABLED FACILITIES:** Walk in showers in every room.

**PETS:** Pets allowed. Rooms available at additional cost.



Queen Room	\$120
Extra Person/Cot	\$10
Pet friendly rooms	\$20 surcharge per day

## AUGUSTA COURTYARD MOTEL

**MAP REFERENCE:** F7

**ADDRESS:** 10 Eyre Highway

**PHONE:** 08 8642 3622

**EMAIL:** [motel@augustacourtyard.com.au](mailto:motel@augustacourtyard.com.au)

Star Rated 3.5 Star

25 Units – Full Guest Capacity: 59 Guests

Golden Chain Members will receive a 10 % Discount .

**FACILITIES:** Motel facilities include complimentary Continental Breakfast, non-smoking rooms, barbeque area and laundry room. Room facilities include Wi-Fi, kettle, toaster, microwave, air-conditioning, T.V and fridge.

**PARKING:** Complimentary parking located at the front of most rooms.

**DISABLED FACILITIES:** Disabled room available on request.

**PETS:** No pets allowed.



Standard Twin	\$130
Deluxe Queen	\$140
Deluxe Twin	\$160
Executive King	\$160
Studio Apartment (1 Bed)	\$190
Studio Apartment (2 Beds)	\$210

## COMFORT INN & SUITES – AUGUSTA WESTSIDE

**MAP REFERENCE:** F6

**ADDRESS:** 3 Loudon Road

**PHONE:** 08 8642 2488

**EMAIL:** [reservations@augustawestside.com.au](mailto:reservations@augustawestside.com.au)

RAA Rating 3.5 Star

27 Units – Full Guest Capacity: 87 Guests

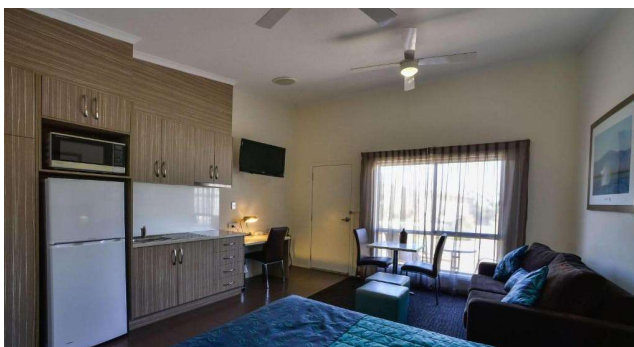


**FACILITIES:** Hotel facilities include Laundry facilities, a barbeque area, gym and seasonal pool. Room facilities include Wi-Fi, kettle, toaster, microwave, air-conditioning, TV, ensuite, fridge, hairdryer, iron, and complimentary toiletries.

**PARKING:** Complimentary parking located outside guest rooms.

**DISABLED FACILITIES:** No disability access rooms/ facilities.

**PETS:** No pets allowed.



Spa Room with King Bed	\$165	Executive Queen + Single Bed	\$149
Queen Room	\$139	Queen Bed + 2 Single Beds	\$149
Queen Room + Sofa Bed	\$139	2 Queen Beds	\$149
Queen Bed + 1 Single	\$139	Queen + 3 Single Beds + Sofa Bed	\$159
Studio Queen Bed + Sofa Bed	\$170	Spa Apartment Queen+ Sofa Bed	\$220
3 Bedroom Unit	\$260		

## COSTELLO HOTELS

**MAP REFERENCE:** H7

**ADDRESS:** 54 Commercial Road, Port Augusta

**PHONE:** 08 8823 4068

**EMAIL:** [reservations@costellohotels.com.au](mailto:reservations@costellohotels.com.au)



7 Apartments – Full Guest Capacity – 18 Guests

**FACILITIES:** Apartment facilities include Wi-Fi, air conditioning, kitchen (includes coffee maker, toaster, hotplate, kitchen equipment, kitchen, microwave, refrigerator), bathroom amenities, ironing facility, flat screen TV and sofa bed on request for extra guests.

**PARKING:** Complimentary secured car parking available on the back side of the Town Hall. Access via Beauchamp Lane.

**DISABLED FACILITIES:** No disabled rooms available .



One Bedroom Suite	From \$195 per night
Two Bedroom Suite	From \$255 per night
One Bedroom Superior Apartment	From \$275 per night
Two Bedroom Deluxe Apartment	From \$305 per night
Loft	From \$375 per night



*PHOTO: Port Augusta by Beardy Photography*

# CROSSROADS ECO MOTEL

**MAP REFERENCE:** E6

**ADDRESS:** 45 Eyre Highway

**PHONE:** 08 8642 2540

**EMAIL:** [booking@ecomotel.com.au](mailto:booking@ecomotel.com.au)



22 Rooms – Full Guest Capacity: 51 Guests

**FACILITIES:** . Motel facilities include free Wi-Fi, guest lounge and barbeque area available for all guests. Room facilities include King Beds, ensuite, kitchenette, fridge, microwave leather sofa, outdoor deck area and 40 inch TV and desk.

**PARKING:** Complimentary Parking located outside guest rooms.

**DISABLED FACILITIES:** Two disabled rooms available .

**PETS:** Two pet friendly rooms available.



Standard Room (King bed)	\$ 139
King Deluxe Room (King Beds)	\$144
Twin Room (King Bed + Single Bed)	\$ 159
Disability Access/Pet Friendly (KB + S)	\$ 165 with pet \$144 without pet
Disability Access Room/Pet Friendly (King Bed)	\$ 165 with pet \$144 without pet
Family Room (Queen Bed + 2x Single Beds)	\$ 179
Extra bed/guest	\$ 20



*PHOTO: Red Banks*

*By Beardy Photography*



## FLINDERS HOTEL MOTEL

**MAP REFERENCE:** H7

**ADDRESS:** 39 Commercial Road

**PHONE:** 08 8642 2544

**EMAIL:** [info@thehotelflinders.com](mailto:info@thehotelflinders.com)

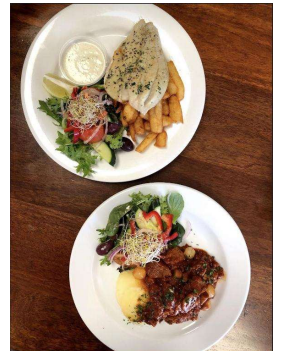
27 - Rooms (some upstairs) Full Guest Capacity: 45 Guests

**FACILITIES** Hotel facilities include Free Wi-Fi, Restaurant, gaming room and Bar available on site for guests. Room Facilities include private amenities, air-conditioning/heating, coffee making facilities, daily housekeeping and laundry facilities available by request at additional cost.

**PARKING:** Complimentary secure parking located behind hotel.

**DISABLED FACILITIES:** No wheelchair access rooms.

**PETS:** No pets allowed.



Queen Room	\$120
Queen+ 1 Single Bed	\$160
Queen+ 2 Single Beds	\$180
Queen + 3 Single Beds	\$200



*PHOTO: Port Augusta by Beardy Photography*

## HIGHWAY ONE MOTEL

**MAP REFERENCE:** N14

**ADDRESS:** National Highway One

**PHONE:** 08 8642 2755

**FREE CALL:** 1800 066 262

**EMAIL:** [admin@highwayonemotel.com.au](mailto:admin@highwayonemotel.com.au)



RAA Rating 3.5/4 Stars

45 Units – Full Guest Capacity: 121 Guests

**FACILITIES:** Motel facilities includes Laundry and Barbeque area are available to utilise. Room Service and complimentary Wi-Fi accessible to all guests. Guests can enjoy a meal at the on-site Gallery Restaurant and bar.

Room facilities includes an ensuite with complimentary toiletries, hairdryer, flat-screen TV kettle, toaster and bar fridge. Deluxe Queen rooms have full kitchenette. Rooms (excluding budget rooms) have microwaves. Certain rooms feature a seating area for your convenience.

**PARKING:** Complimentary parking located outside guest rooms.

**DISABLED FACILITIES:** 1 Wheelchair access room with shower chair on request.

**PETS:** No pets allowed.



Rooms	1- 2 guests	3 guests	4 guests
<b>Standard</b> Queen	\$105	-	-
<b>Standard</b> Queen 1 Single	\$110	\$130	-
<b>Standard</b> Queen 2 Singles	\$105	\$125	\$145
<b>Economy</b> King	\$110	-	-
<b>Economy</b> Queen + 2 Singles	\$100	\$120	-
<b>Deluxe</b> King	\$130	-	-
<b>Deluxe</b> Queen 1 Single	\$135	\$155	-
<b>Deluxe</b> Queen with Kitchenette	\$140	-	-
<b>Deluxe</b> 2 Bedroom Q + 2 Singles	\$120	\$140	\$160

## MAJESTIC OASIS APARTMENTS

**MAP REFERENCE:** G7

**ADDRESS:** Marryatt Street

**PHONE:** 08 8648 9000 **FAX:** 08 8648 9088

**EMAIL:** [oasis@majestichotels.com.au](mailto:oasis@majestichotels.com.au)



Star Rating 4

75 Units – Full Guest Capacity: 206 Guests

**FACILITIES:** Facilities include barbeque area, room service, swimming pool and laundry facilities available. EV Charging Station. Wi-Fi and breakfast available.

Room facilities include self-contained apartments equipped with large screen TVs, Foxtel, DVD player, kitchenette, microwave, tea and coffee facilities, phone, iron/ironing board, hairdryer, bathroom, laundry facilities, electric blankets and in room safe. Some apartments feature a private courtyard or outdoor deck.

**PARKING:** Complimentary secure parking located outside rooms.

**DISABLED FACILITIES:** Accessible rooms available on request .

**PETS:** 3 Pet friendly rooms available. Pet friendly room rates **include** \$50 cleaning fee.



Rooms	Fri- Sun	Mon- Thu
Studio Apartment (1-2people)	\$145	\$195
Deluxe 1 Bedroom (1-2people)	\$180	\$205
Waterfront 1 bedroom (Downstairs)	\$205	\$230
Water view 1 Bedroom (Upstairs 1-3 people)	\$205	\$245
Waterfront 2 Bedroom (1-5 people)	\$250	\$275
Waterfront Spa (1-2people)	\$220	\$245
<b>Pet Friendly</b> - Deluxe 1 Bedroom (1-2people)	\$265	\$265
<b>Pet Friendly</b> - Waterfront 1 bedroom (Downstairs)	\$290	\$290
<b>Pet Friendly</b> - Waterfront 2 Bedroom Apartment (1-5 ppl)	\$335	\$335

# MOTEL POINSETTIA

**MAP REFERENCE:** F7

**ADDRESS:** 24 Burgoyne Street

**PHONE:** 08 8642 2411

**EMAIL:** [motelpoinsettia@bigpond.com](mailto:motelpoinsettia@bigpond.com)

RAA Rating 3 Star

23 Rooms - All ground floor + Full Guest Capacity: 65 Guests

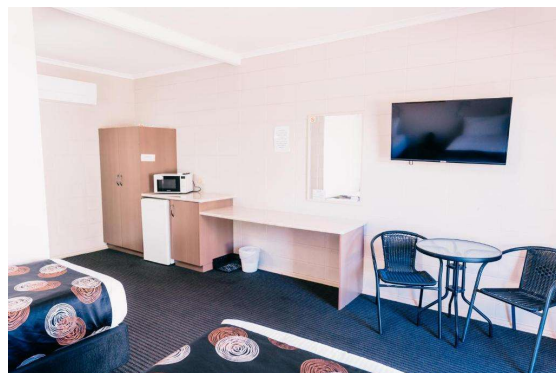
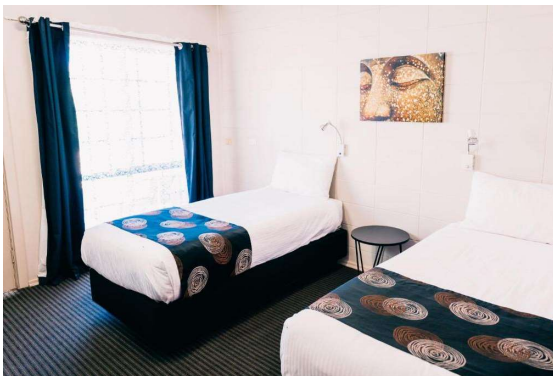


**FACILITIES:** Motel facilities include barbecue area, laundry facilities and guest kitchen. Room facilities include air-conditioning, free Wi-Fi, a microwave, toaster, a kettle and an iron.

**PARKING:** Complimentary parking located in front of guest rooms.

**DISABLED FACILITIES:** NO accessible rooms - all showers walk in.

**PETS:** Pet friendly rooms available. Pet friendly rooms will incur an additional \$20 per night fee.



Twin Room	\$100 (1 Guest) \$120 (2 Guests)
Queen	\$120
Deluxe Twin (Sleeps 3)	\$135
Quadruple (Sleeps 4)	\$150
Two Bedroom Apartment (Sleeps 5)	\$160
Standard Family (Sleeps 5)	\$160
Family Suite (Sleeps 6)	\$160
Cots	\$10

## PAMPAS MOTEL

**MAP REFERENCE:** K10

**ADDRESS:** 76 Stirling Road

**PHONE:** 08 8642 3795

**EMAIL:** [info@pampasmotel.com.au](mailto:info@pampasmotel.com.au)

TiCSA Rating 4 Star

10 Rooms – Full Guest Capacity: 27 Guests

**FACILITIES:** Motel facilities include laundry services, shared main house, shared pergolas, shared barbeque area. Room facilities include Wi-fi, air conditioning/heating. All rooms have a TV and fridge, suite rooms also have a kitchenette with microwave, iron/ironing board and extra blankets.

**PARKING:** Complimentary on-site, secure gated parking.

**DISABLED FACILITIES:** No disability access rooms.

**PETS:** No pets allowed.



Queen + 1 Single	\$125
Double + 1 Single With Shared Bathroom Facilities	\$105
Double Bed With shared Bathroom facilities	\$105

## PASTORAL MOTEL

**MAP REFERENCE:** J9

**ADDRESS:** Stirling Road

**PHONE:** 08 8642 2818

**EMAIL:** [gaming@pastoralhotelmotel.com.au](mailto:gaming@pastoralhotelmotel.com.au)

RAA Rating 3.5 Star

13 Units – Full Guest Capacity: 35 Guests



**FACILITIES:** Motel facilities include bistro, bar, bottle shop and gaming room located across the car park open 7 days a week. NEW! EV charging station (slow charging). Room facilities include self-contained rooms feature en-suite bathrooms, kitchenette, iron/ironing board, hair dryer, cots (on request), roller beds (on request at additional cost) laundry facilities, air conditioning, flat-screen televisions, Foxtel and free Wi-Fi.

**PARKING:** Complimentary parking located outside guest rooms.

Large vehicle parking available in carpark. Lockable facilities for your trailer, boat or motorbike on request.

**DISABLED:** Disabled access room available.

**PETS:** No pets allowed.



Rooms	1 Guest	2 Guests	EXTRA
Superior Queen	\$120	\$130	\$25
Superior King	\$120	\$130	\$25
Sup King Twin	-	\$130	-
Interconnecting Family	-	\$185	-

## **STANDPIPE GOLF MOTOR INN**

**MAP REFERENCE:** E5

**ADDRESS:** Stuart Highway and Highway One

**PHONE:** 08 8642 4033

**EMAIL:** [info@standpipe.com.au](mailto:info@standpipe.com.au)

RAA Rating 3.5 star

86 Units – Full guest capacity: 130 Guests

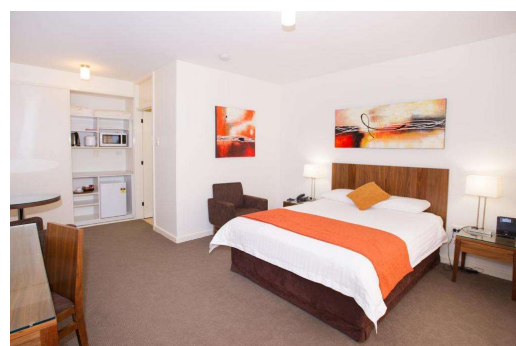
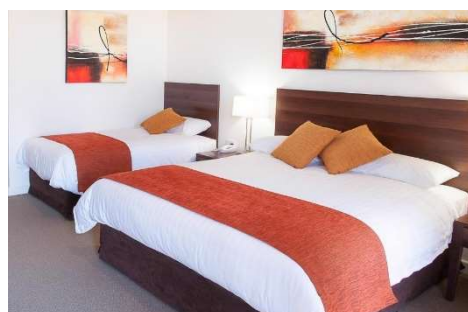


**FACILITIES:** Motel facilities include 24/hour reception, 18 – hole golf course, barbeque area, gazebo, swimming pool, conference/meeting rooms, laundry services, Tesla charging stations, breakfast service and restaurant is open 7 days a week with both Indian and Western menu. Room facilities include daily housekeeping, air-conditioning, digital flat-screen TV, free high-speed Wi-Fi, microwave, toaster, fridge tea /coffee making facilities and room service.

**PARKING:** Complimentary parking available located outside guest rooms.

**DISABLED:** Disabled access room available.

**PETS:** Pet friendly rooms available.



Standard Queen /Twin	\$160
Deluxe Queen/Twin	\$170
Disabled Queen/Twin	\$170
Executive Queen	\$185
Pet Friendly Rooms	\$170
Family Q+2S (4ppl)	\$180
Apartment King & Queen Divan	\$220
Additional person	\$ 10
Cots & fold out beds	\$ 20

# CARAVAN & CABIN PARKS

## SHORELINE CARAVAN PARK

**MAP REFERENCE:** D7

**ADDRESS:** Gardiner Avenue PO Box 519

**PHONE:** 08 8642 2965

**EMAIL:** [info@shorelinecaravanpark.com.au](mailto:info@shorelinecaravanpark.com.au)



29 Units & 4 Bunkhouse – Full guest capacity – 139 Guests

**FACILITIES:** Park facilities include Laundry facilities, camp kitchen ( including gas stoves, microwaves, toasters, kettles, utensils) barbeque area, games room and swimming pool available to all guests. G’Day Rewards and Top Park Members receive a 10% discount. Cabin facilities include air conditioning, TVs, ensuite bathrooms and Wi- Fi (200 GB free). Most cabins also include cooking facilities (excludes budget and single cabins).

**PARKING:** Complimentary parking located in front of cabins.

**DISABLED:** Disabled cubicle in bathroom facilities, Disabled cabin on request.

**PETS:** No pet’s allowed in cabins, allowed on all sites.



	1-2 Guests	Extra Adult	Extra Child
Waterfront Cabin	\$150.00	\$20.00	\$15.00
Flinders Cabin	\$110.00	\$15.00	\$10.00
Standard 2 Bedroom	\$105.00	\$10.00	\$ 7.00
Standard 1 Bedroom	\$ 95.00	\$10.00	\$ 7.00
Budget Cabin	\$ 79.00	-	-
Single Budget Cabin	\$ 75.00	-	-
Powered Ensuite Site	\$ 56.00	\$10.00	\$ 7.00
Powered Site	\$ 45.00	\$10.00	\$ 7.00
Un-powered Site	\$ 37.00	\$10.00	\$ 7.00
Backpacker Bunkhouse	\$ 55.00	\$10.00	-
Coach Site (Min 10 pax)	\$ 9.90 per person (min of 10pax)	-	-
Van Storage (proof of insurance required)	\$ 4.40 per night	-	-



# PORT AUGUSTA MOTOR HOME PARK

**MAP REFERENCE:** N11

**ADDRESS:** Old Power Station Road

**PHONE:** 08 8642 4122

**EMAIL:** [centfc@bigpond.net.au](mailto:centfc@bigpond.net.au)



20 sites available

This campground is for **FULLY SELF-CONTAINED campers ONLY – NO Tents, Rooftop Tents or Swags**. No bookings required. No electricity connection/ no amenities for guests.

**FACILITIES:** Dump point and water facilities are available. Payment can be made through the honesty box or at the Football club. Open 24/7. Football Club open Monday – Friday for Bar and Meals, Saturdays – Bar.

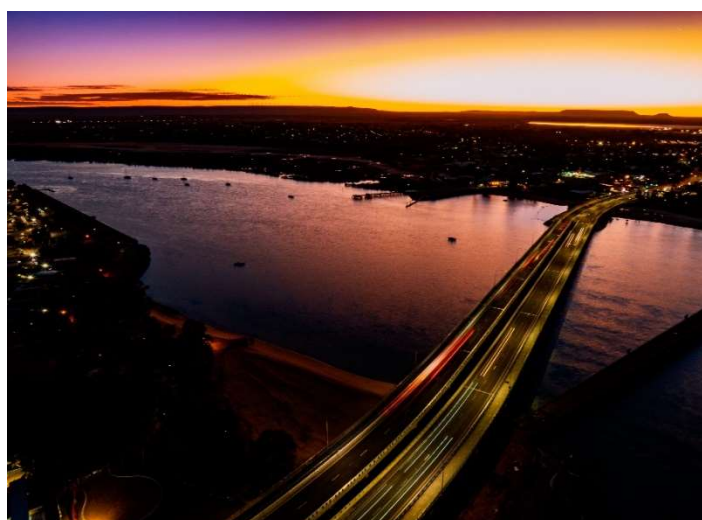
**PARKING:** All sites outlined with white posts.

**DISABLED:** no facilities.

**PETS:** Pets allowed; must be restrained at all times.



Self Contained Motorhomes / Caravans	\$10.00 per night \$60 for 7 consecutive nights – <b>MUST BE organized with manager</b>
--------------------------------------	--



*PHOTO: Port Augusta by Beardy Photography*

## PORT AUGUSTA DISCOVERY PARKS

**MAP REFERENCE:** E6

**ADDRESS:** Corner Highway 1 & Stokes Terrace Port Augusta

**PHONE:** 08 8647 2700

**EMAIL:** [portaugusta@discoveryparks.com.au](mailto:portaugusta@discoveryparks.com.au)

55 Cabins + 70 Sites – 255 Cabin Guests capacity



**FACILITIES:** Park facilities include a Barbecue Area, table tennis, swimming pool, toddler’s pool, camp kitchen, shop offering ice, laundry facilities (card and coin accepted), recreation room with TV, Gym and Playground.

All G’Day Rewards members will receive 10% discount.

Furnished, self-contained cabins and Standard cabins provide linen, air conditioning, TV, microwave, kettle.

Some but not all cabins also have stove top or full cooking facilities.

**PARKING:** Parking located alongside cabins or sites. Standard rooms must use the communal carpark for guests .

**DISABLED:** Access cabins available. NO shared disabled facilities.

**PETS:** Pets allowed on all sites. Pet friendly cabins available.



	2 Persons
Unpowered site	From \$27.00
Powered (Standard)	From \$37.00
Drive Thru	From \$42.00
Ensuite Sites	From \$47.00

All Cabin accommodation from \$94 - 180.00 per night

(Daily specials available please call park for more information)

Standard Cabin

Superior Cabin

Deluxe Cabin

Pet Friendly Economy Cabin

## FULLER VIEWS CABIN PARK

**MAP REFERENCE:** D16

**ADDRESS:** 50 Quorn Road, Stirling North

**PHONE:** 08 8643 6689

**EMAIL:** [info@fullerviews.com.au](mailto:info@fullerviews.com.au)

14 Cabins - Full Cabins Capacity: 46 Guests

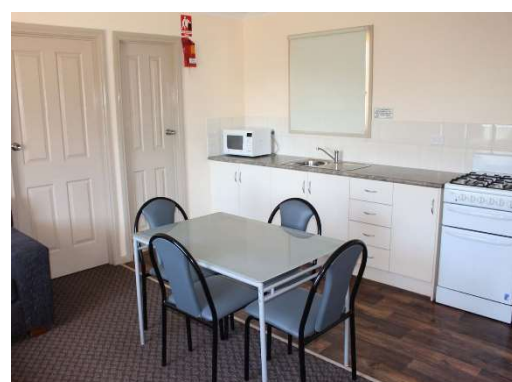
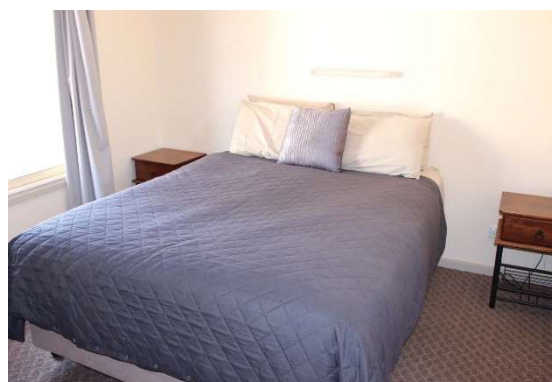


**FACILITIES:** Park facilities include Free Wi-Fi, Guest laundry and barbeque area. Cabins facilities include fully self contained with kitchen (fridge/freezer, microwave oven, gas stove, air conditioning, sink, cutlery, crockery, toaster, kettle) and linen provided.

**PARKING:** Complimentary parking spaces located outside cabins.

**DISABLED:** Disabled access cabins available.

**PETS:** No pets allowed.



1 Bedroom Cabin – Queen Bed (sleeps 2)	\$140.00
2 Bedroom Cabin - 1 Queen/3 single (Sleeps 2,3,4 or 5)	\$185.00
2 Bedroom Cabin - 2 Queen Beds and 1 Single Bed (Sleeps 2,3,4 or 5)	\$185.00
SPA 1 Bedroom Cabin 1 Queen Bed (Sleeps 2)	\$165.00

# AUGUSTA CARAVAN PARK – STIRLING NORTH

**MAP REFERENCE:** C15

**ADDRESS:** Brook Street Stirling North

**PHONE:** 08 8643 6357

**EMAIL:** [info@augustacp.com.au](mailto:info@augustacp.com.au)



50 caravan sites, 6 self contained units. Full Unit Capacity: 16 Guests.

**FACILITIES:** Park facilities include Big Rig Friendly, drive through sites, laundry facilities, Wi-Fi. Barbeque area, camp kitchen, communal fire pit (seasonal) and picnic area for all guests.

Caravan storage (\$4 per day) – caravans stored inside park (no shelter not behind fencing) – no insurance details required.

Cabin facilities include linen, TV, air conditioning, fully self-contained kitchenette with microwave, toaster, fridge, and kettle.

**PARKING:** Complimentary parking located alongside units (verandah parking for front units only)

**DISABLED:** Disabled showers and toilets facilities available for all guests – no disabled cabins.

**PETS:** Pets allowed on all sites and pet friendly units available.



	1-2 Guests	Extra Adult over 12 yrs	Extra Child 5-12 yrs
Powered Site	\$35.00	\$10	\$5
Unpowered site	\$29.00	\$10	\$5

	1 person	2 people	Additional Guests
Units 1&2 (1 queen/ensuite)	\$85	\$100	-
Unit 3 (1 double/ensuite)	\$95	\$125	-
3 B House (1 queen/2 singles)	\$95	\$120	2 x Queen Bed \$150
2 Bedroom Cabin (Ensuite)	\$95	\$110	2 Beds \$115 3 Beds \$150

## **BENTLEY'S CABIN PARK**

**MAP REFERENCE:** D4

**ADDRESS:** Lot 2 Stuart Hwy, Port Augusta

**PHONE:** 08 8641 1620

**EMAIL:** [reservations@cabinpark.com.au](mailto:reservations@cabinpark.com.au)

115 Cabins – Full Guest capacity: 342 Guests

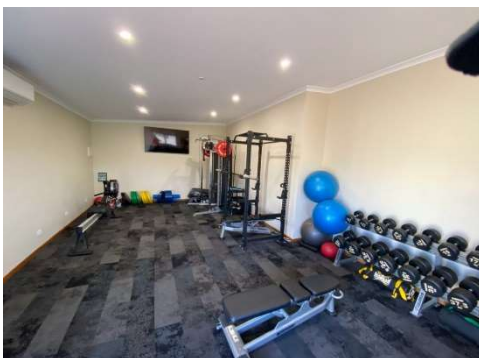
**FACILITIES:** Park facilities include Gated Cabin Park, guest laundry, complimentary Wi-Fi, Gym, Barbeque area, Bar (Open until 8:30pm).

Cabin facilities include fully self-contained kitchen with microwave, stovetop, kettle, toaster, fridge, glassware, plates, utensils and crockery. Complimentary tea and coffee. Towels and Linen provided. TV, dining suite and lounge. 3 bedroom cabins also have spa bath, dishwasher and full oven facilities.

**PARKING:** Complimentary parking located alongside cabin.

**DISABLED:** 5 disabled/ wheelchair access rooms available.

**PETS:** No pets allowed.



<b>Rooms</b>	<b>1-2 Guests</b>	<b>Extra person</b>
1 Bedroom Ensuite Cabin (1 queen)	\$165	-
2 Bedroom Ensuite Cabin (1 x queen & 2 king singles)	\$190	\$20
3 Bedroom Ensuite Cabin with spa/dishwasher (sleeps 6) (2 x queen & 2 king singles)	\$250	\$20