

Viterra Operations

**How to solve an
attraction and retention
problem in rural SA....**



Viterra – what we do

- Our business covers the whole supply chain from the farm gate through to delivering products to consumers in Australia and overseas.
- We originate, store, handle, transport and market a range of agriculture commodities including grains, oilseeds, pulses and cotton.
- As one of the largest buyers of Australian commodities nationally, we purchase directly from growers and supply national and international consumers through our marketing and logistics network.
- Our storage and handling network includes upcountry sites and strategically located port terminals spanning key growing regions in South Australia and western Victoria.



Our contribution to our state

- **In the past 12 months Viterra has:**
 - Spent \$1.244 billion in South Australia
 - Spent \$1.004 billion of this purchasing grain from South Australian growers
 - Spent \$240 million on maintaining and operating our grain supply chain in the state
 - We employ 700 permanent staff in regional and urban South Australia
 - We employ 1500 casual staff across regional South Australia annually over the harvest period
 - This year, an investment of approximately \$80 million in South Australian wages
 - Our exports not impacted by COVID (we are an essential service) or specific international events, as our exports are spread across entire globe



ACCOMMODATION PROJECT

WHY?

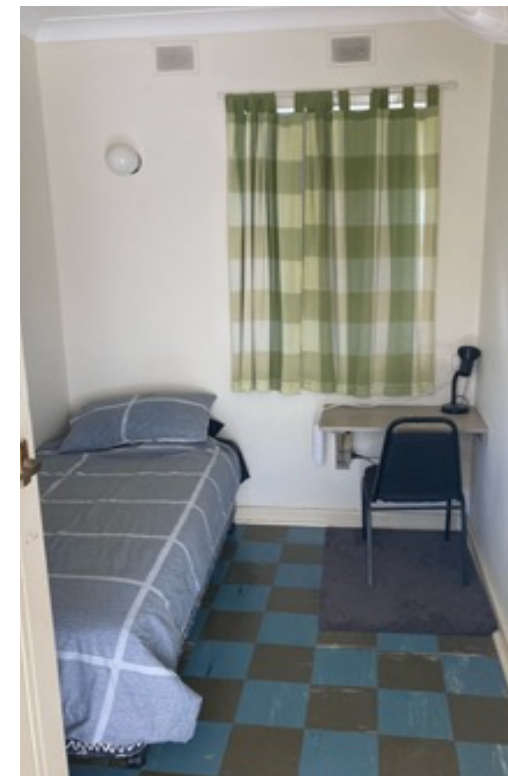
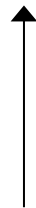
Review use, requirements and options to assist the business in attracting and retaining operational labour



ROADMAP

WHERE

Current and Future
Costs
Risks
Community
Alternatives



WHEN

Harvest
Year long
Reduce Reactive
purchases



NEXT STEPS

Planning for 23/24
Availability
Capex/Opex Budgets
Footprints



WHAT

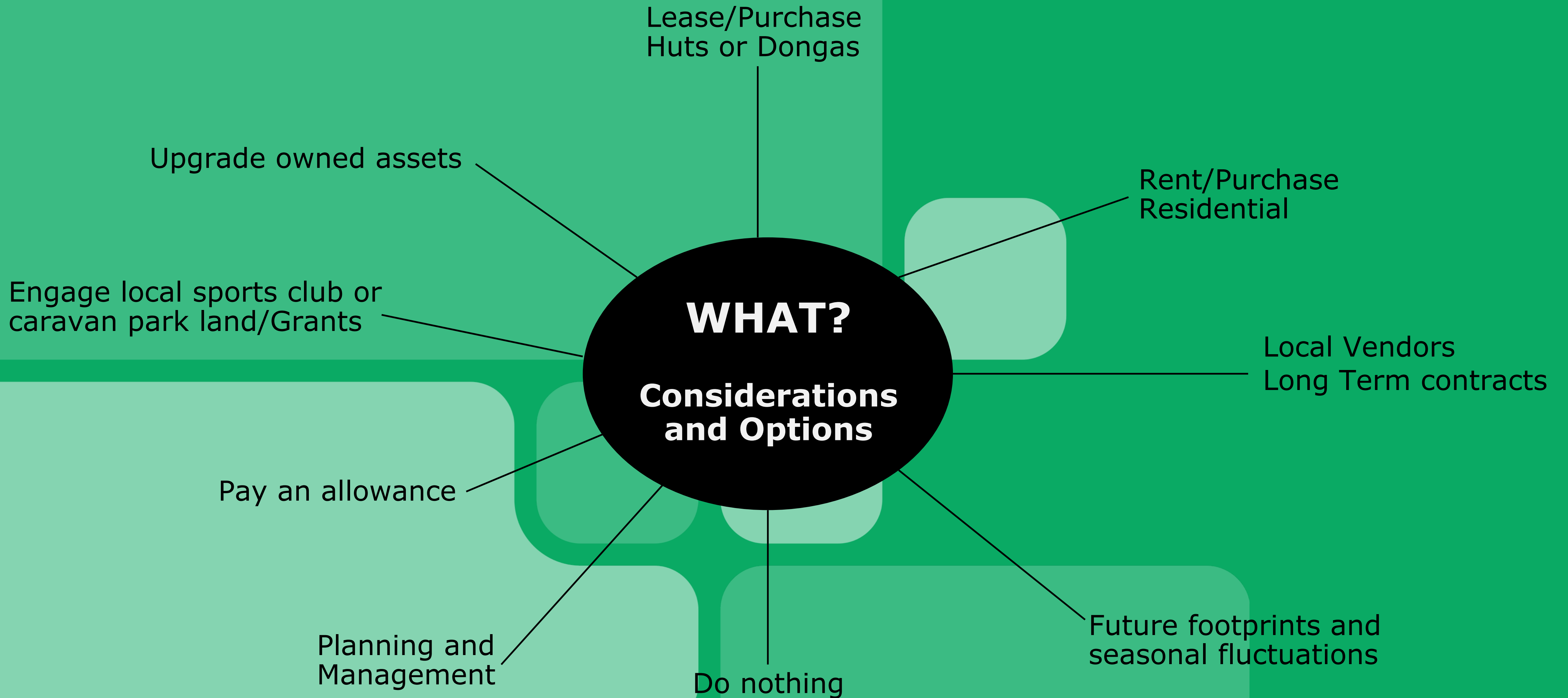
Experience
Standards
Cost
Availability



WHO

Harvest Casuals
Contractors
Internal travel
Accommodation Team
Finance/Property
Safety/HR

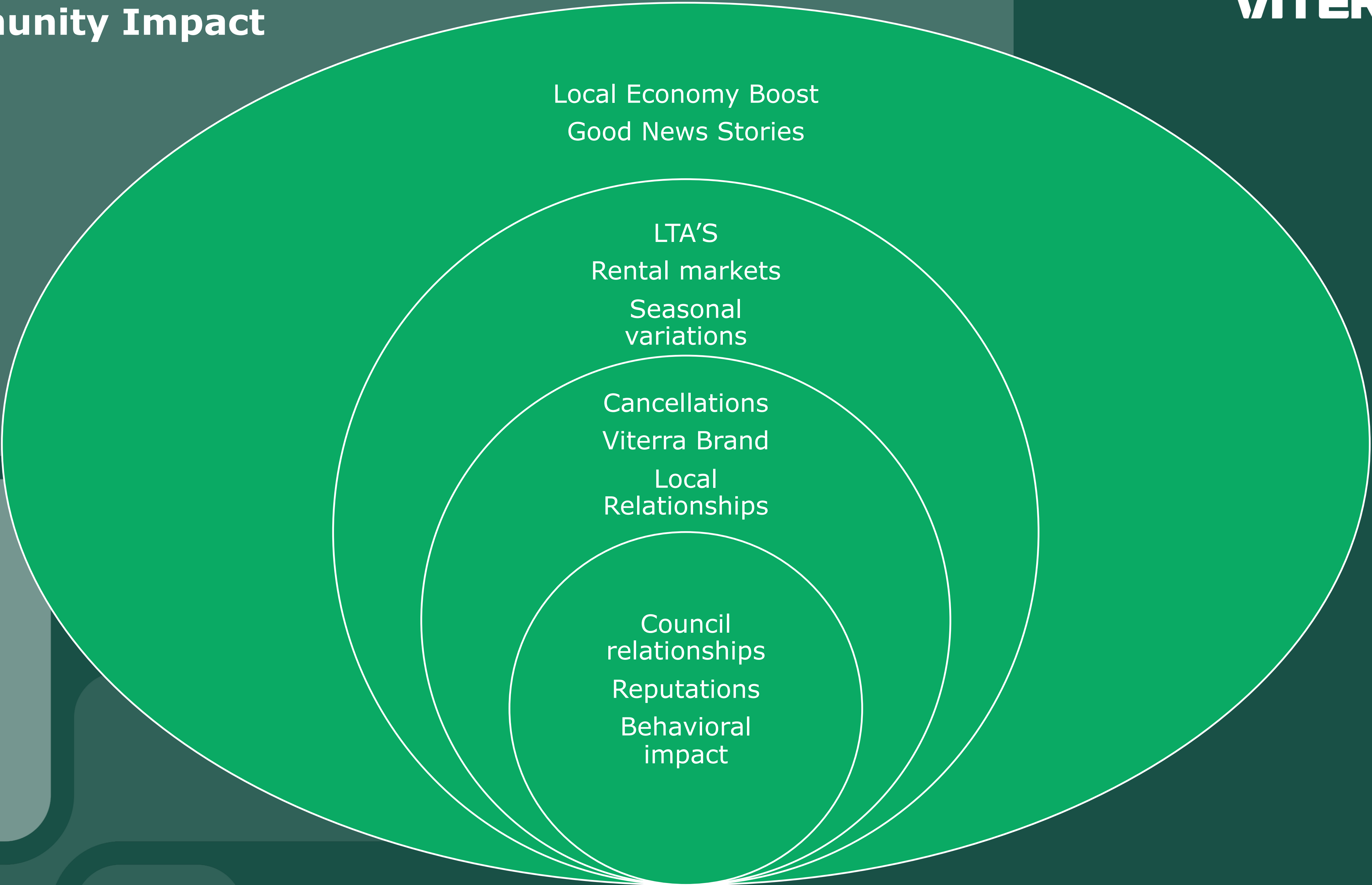




Risks Considered

- ☐ **Future Footprint**
 - ☐ **Safety**
- ☐ **Vendor relationships**
 - ☐ **Property sales**
 - ☐ **Competition**
 - ☐ **Availability**
- ☐ **Community Impact**

Community Impact



Outcomes

- Long term accommodation project
- Working with local councils to establish permanent accommodation that can be utilised across industries in regional areas
- Benefit to growers, local community, and workers being drawn in to the local regional areas
- Establishing short term accommodation options for harvest period in localised areas
- Working with current available accommodation in certain locations to utilise existing options for harvest periods



